

# SEMPlice LED

ID ECSMP

IP 40



5 YEARS WARRANTY

**SEMPlice LED** is an **innovative lighting solution** suited to a wide range of interior applications including **commercial, leisure and retail environments**. Never before has a product been so versatile, with suspended or directly surface mounted versions available for wall and ceiling mounting. They can be installed individually, continuously mounted or even pattern formed using the tailored range of accessories. Its **uniqueness is a scattered emitted light including the ends**, thanks to the integrated LED technology and translucent end caps. A broad collection of matching products can be implemented for free standing and EU track mounting, giving the user continuity of product and complete design freedom in a project.

## ☑ Features

- Direct/indirect emission
- UGR<22

## 💡 Led

- 3000K/4000K
- >125 lm/W
- CRI>80/>90
- Eye safety: RG0/RG1
- Mac Adams 3
- L90/B50 >50.000h

## ☑ Specifications

- Integrated driver
- PG optics for soft and homogeneous emission with no shadow areas
- EB optics for side emission

## ☐ Body

- Shockproof, antistatic technopolymer with an exclusive paint treatment that guarantees a homogeneous "soft" emission over the entire surface. The ending and junction accessories are made of the same materials, with an invisible coupling fastening system

## ☆ Certifications

- CE Conformity
- ETL Conformity
- Energy efficiency C

## 📦 On request

- 0-10V
- 3500K



Design  
Quargnale // Ruatti studio Architetti

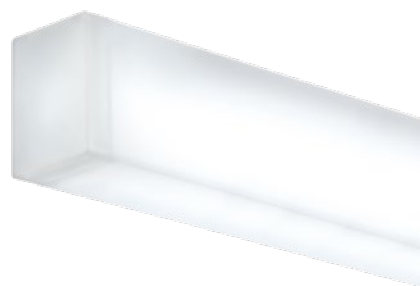
## SEMPlice LED\_\_\_\_\_

Ceiling, suspension and wall installation, PMMA technopolymer (UGR<22) with surface treatment for completely uniform light distribution.  
Integrated LED technology.



UGR<22

IP 40



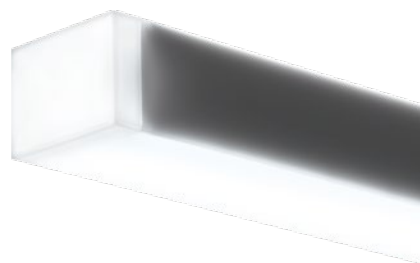
## SEMPlice LED\_\_\_\_\_EB

Ceiling, suspension and wall installation, PMMA technopolymer (UGR<22) with surface treatment and super-pure aluminum reflector for bi-directional light distribution.  
Integrated LED technology.



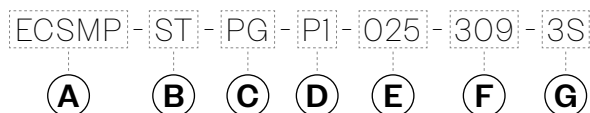
UGR<22

IP 40

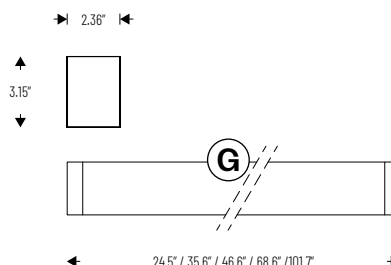


# SEMPlice LED

## PRODUCT CODE EXAMPLE



## SIZE



### **A** FAMILY

ECSMP SEMPLICE LED

### **B** POWER

ST - Standard power  
 DP - Decrease power (only for DP, DP followed by up three numbers for indicated the power)

### **C** OPTICS

PG - Uniform light distribution  
 EB - Bi-directional light distribution

### **D** MOUNTING

P1 - Pendant 59.05" (with flexible cord and power supply box)  
 P2 - Pendant 59.05" (with flexible cord and power supply box, for continuous row)  
 P3 - Pendant 118.11" (with flexible cord and power supply box)  
 P4 - Pendant 118.11" (with flexible cord and power supply box, for continuous row)  
 SM - Surface mount (ceiling)  
 WM - Wall mount

### **E** LENGHTS

025 - 24.5"  
 036 - 35.6"  
 047 - 46.6"  
 069 - 68.6"  
 102 - 101.7"

### **F** LED CCT

309 - 3000K CRI90  
 359 - 3500K CRI90 (on request)  
 409 - 4000K CRI90

### **G** WIRING

2S - 0-10V  
 3S - ON/OFF

## LUMEN PACKAGE

SEMPLICE LED		PG	EB
4000K		Direct emission	Double lateral emission
24.5"	LP	24W 2268lm	24W 2167lm
35.6"	LP	36W 3402lm	36W 3251lm
46.6"	LP	48W 4536lm	48W 4334lm
68.6"	LP	72W 6804lm	72W 6502lm
101.7"	LP	108W 10206lm	108W 9752lm

## ACCESSORIES

ECSMP-11 - Electrified linear joint

ECSMP-050-WH - Internally electrified creative joint for horizontal change of direction

ECSMP-05V-WH - Internally electrified 90° joint for vertical change of direction

### FINISH ACCESSORIES (xx):

WH - White



Electrified linear joint with total emission for continuous rows installation.



Internally electrified creative joint for horizontal change of direction.



Internally electrified 90° joint for vertical change of direction.