

TRACK PLUS

ID 15

IP 20



5 YEARS WARRANTY

The **TRACK PLUS DALI UL** has an extra 2 conductors for use in DALI applications and is also offered in a **RECESED version**, which can be used to plasterboard ceiling. All versions come in different lengths with mounting options which include **Round, recessed Trimless and "H" suspended** installation. The comprehensive range of compatible products and accessories complete this versatile product.

☑ Specifications

- The conductors are integrated in the track by means of rigid extruded profile made from insulating material guaranteeing high dielectric strength
- The 3 separate circuits consisting of 3 phase conductors and a common neutral allow for 3 lighting configurations to be switched individually
- The 3-phase supply allows for an overall loading of 3x120V/20A + D+/D- 2x1A/50V FELV AC (DALI) 60Hz which can be divided among the 3 circuits
- The earth, positioned on the side, leads to an asymmetrical structure of the track. As a consequence couplers must be selected carefully

☐ Body

- Aluminum

🗨 Colors

- White RAL 9003 - code B
- Black RAL 9011 - code C8

⇄ Related products

- Teres Pro (p. 56)
- Teres (p. 52)

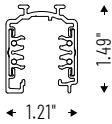
📦 On request

- 120V - 2 circuits
- 277V
- ROUND Track Plus DALI
- TRIMLESS Track Plus DALI
- "H" Track Plus DALI

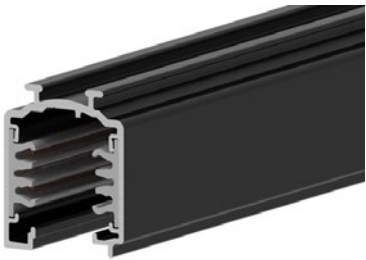


TRACK PLUS UL

ON/OFF, DALI and 1-10V version for ceiling/suspension installation.



IP 20

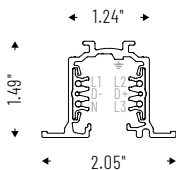


The cross section view shows the position of each line.

Cod.	Notes	In
15AA1DUL	120V - 3 circuits with common Neutral	39.37
15AA2DUL	120V - 3 circuits with common Neutral	78.74
15AA3DUL	120V - 3 circuits with common Neutral	118.11

TRACK PLUS UL

ON/OFF, DALI and 1-10V version for recessed installation.



IP 20



The cross section view shows the position of each line.

Cod.	Notes	In
15AA1DIUL	120V - 3 circuits with common Neutral	39.37
15AA2DIUL	120V - 3 circuits with common Neutral	78.74
15AA3DIUL	120V - 3 circuits with common Neutral	118.11

ACCESSORIES

ACCESSORIES FOR CEILING/SUSPENSION INSTALLATION



Line end 120V-60Hz
Max 20A.

15AA09ELDXDUL
15AA09ELSXDUL



"L" coupler 120V-60Hz
Max 20A.

15AA05DXDUL
15AA05SXDUL



"T" coupler (internal 08/external
06) 120V-60Hz Max 20A.

15AA06DXDUL
15AA06SXDUL
15AA08DXDUL
15AA08SXDUL



"X" coupler 120V-60Hz
Max 20A.

15AA07DUL



External electrified linear
junction 120V-60Hz Max 20A.

15AA11ELDUL



Flexible joint
120V-60Hz Max 20A.

15AA12DUL



Internal electrified linear
junction 120V-60Hz Max 20A.

15AA11DUL



End-cap.

15AA09D



Steel cable suspension kit.
Cable length 78.74".

15AA13D



Steel cable suspension kit.
Cable length 118.11".

15AA1330D



Ceiling mount.

15AA14D

ACCESSORIES

ACCESSORIES FOR RECESSED VERSION



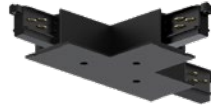
Line end 120V-60Hz
Max 20A. Recessed version.

15AA09ELDXDIUL
15AA09ELSXDIUL



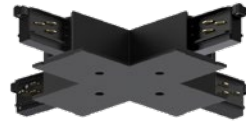
«L» coupler 120V-60Hz
Max 20A. Recessed version.

15AA05DXDIUL
15AA05SXDIUL



“T” coupler (internal 08/
external 06) 120V-60Hz
Max 20A. Recessed version.

15AA06DXDIUL
15AA06SXDIUL
15AA08DXDIUL
15AA08SXDIUL



“X” coupler 120V-60Hz
Max 20A. Recessed version.

15AA07DIUL



Internal electrified linear
junction 120V-60Hz Max 20A.

15AA11DUL



End-cap.
Recessed version.

15AA09D



Bracket for recessed
installation.

15AA17D

ACCESSORIES FOR ALL TRACK VERSIONS



5-7 poles ceiling power
supply box.

Cable length 78.74"
00AA165PUL
00AA167PUL

Cable length 118.11"
00AA165P30UL
00AA167P30UL



Additional IP 40 cover strip.
Length 39.37"

15AAGP1D



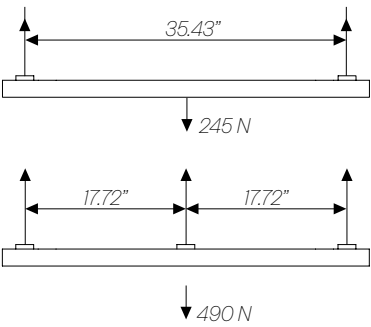
Cutting tool for track
conductors.

15AATC

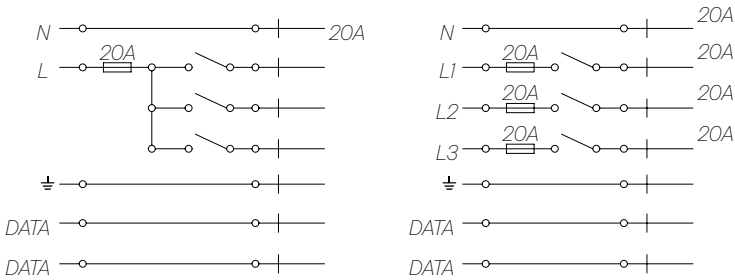
TECHNICAL NOTES

LOAD CAPACITY AND ELECTRICAL DIAGRAMS

LOAD CAPACITY



ELECTRICAL DIAGRAMS



EXAMPLE OF INSTALLATION DIAGRAM WITH ITEM CODES

